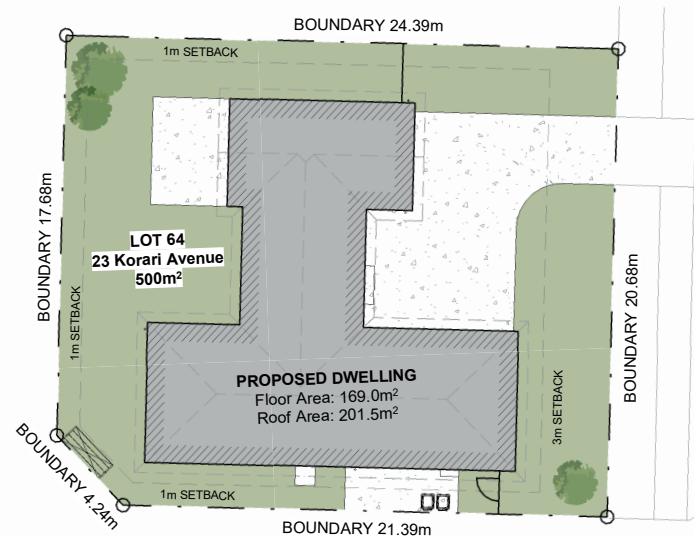


FOR SALE

23 Kōrari Avenue

**LOT
64**



Site Plan



Kōrero mai
Contact us

06 871 5350
info@waingakau.co.nz
www.waingakau.co.nz



Section 500 m²



House 169 m²



Bedroom 4



Bathroom 2



Garage 1

FOR SALE

23 Kōrari Avenue

**LOT
64**



Section 500 m²



House 169 m²



Bedroom 4



Bathroom 2



Garage 1

IRRESISTIBLY CLASSY

The street view of this modern and modest home goes beyond the stunning exterior cladding - there is more than meets the eye. Set within the Waingākau development, this newly built four-bedroom, single internal garage where is perfect for whānau.

The beautiful kitchen forms the social centre of the open plan kitchen, dining and living space, great for hosting whanau gatherings. It offers superb preparation and cooking facilities with a large central island. Positioned north facing allows for maximum sunlight to ensure the living areas are light and inviting.

This home is built to control the climate all year round with a fully ducted mechanical ventilation system and a heat pump. Along with high quality insulation in walls, floor and ceiling, and solar panels to support Haukainga Hauora (Healthy Homes), that are safe, warm, dry, healthy AND efficient.

The master bedroom is your very own oasis, complete with tiled ensuite and walk in wardrobe to add that extra layer of luxury. The house is complete with three large and lavish bedrooms, with a whānau sized bathroom and separate wharepaku. Three double bedrooms, a generous bathroom with modern vanity, standalone tub and shower. The single garage is fully insulated, creating extra space, great for weekend visitors, man cave or the kid's sports equipment.



VISIT OUR WEBSITE & TAKE A VIRTUAL TOUR

Kōrero mai
Contact us

06 871 5350
info@waingakau.co.nz
www.waingakau.co.nz



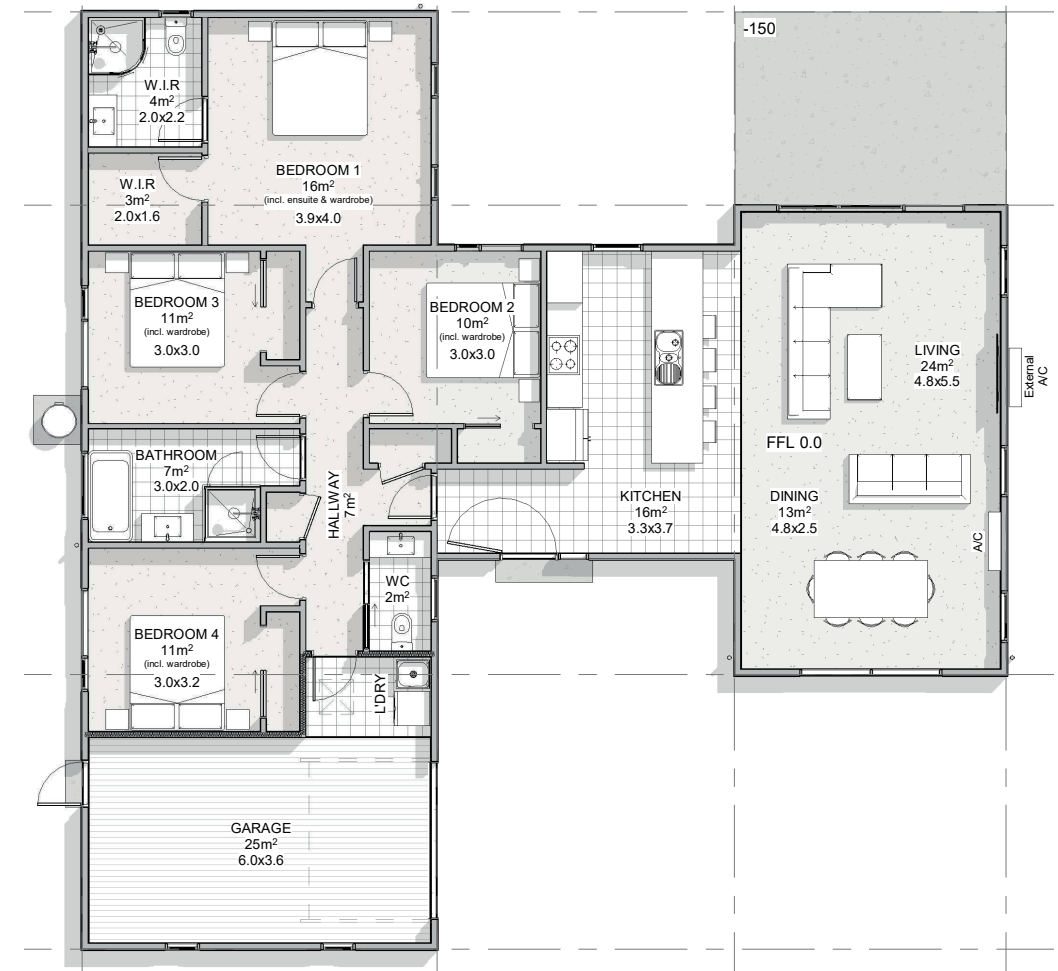
Waingākau

Artistic images

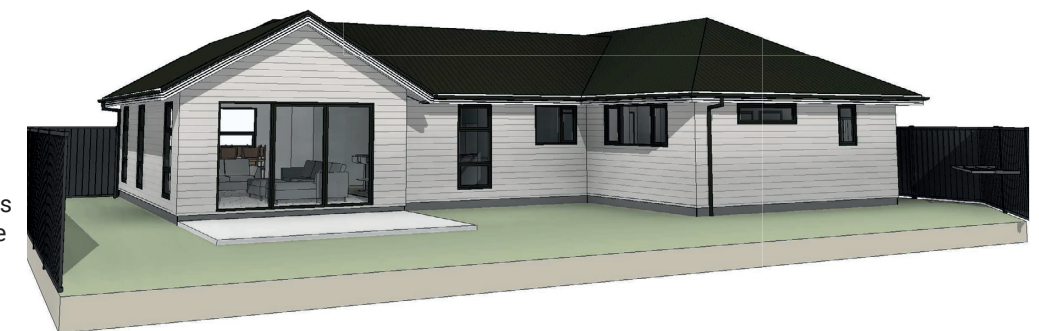
23 Kōrari Avenue

LOT 64

Architectural floorplan



Floor Plan



Please note:
All features, dimensions, colours and stylisation are approximate & subject to minor changes during construction.

Tangata ako ana i te kāinga, te tūranga ki te marae, tau ana

A person nurtured in the community contributes strongly to society