

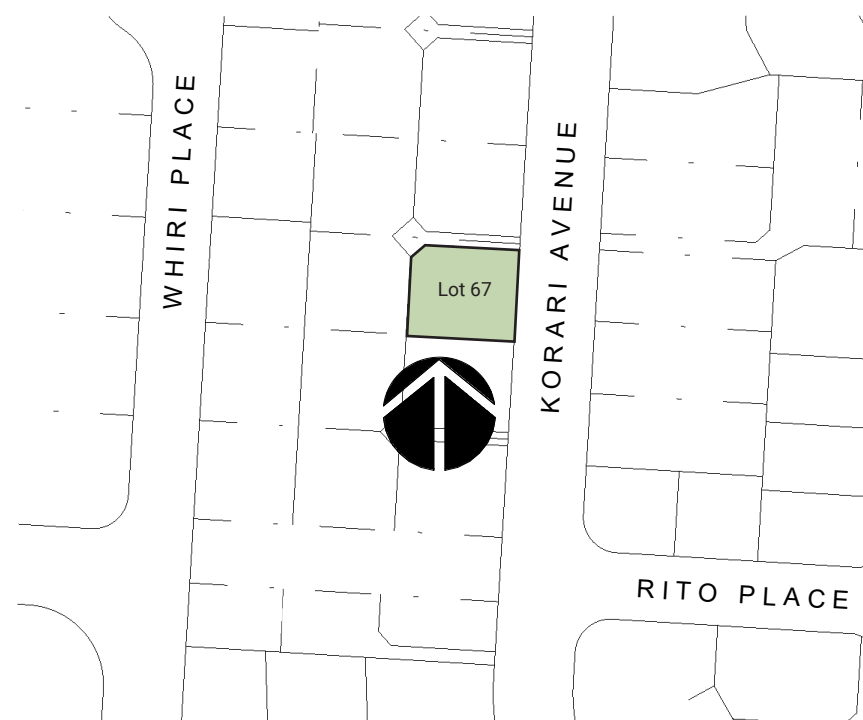
**FOR SALE**

**25 Kōrari Avenue**

**LOT  
67**



Site Plan



**Kōrero mai**  
Contact us

06 871 5350  
info@waingakau.co.nz  
www.waingakau.co.nz



Section 500 m<sup>2</sup>



House 161 m<sup>2</sup>



Bedroom 4



Bathroom 2

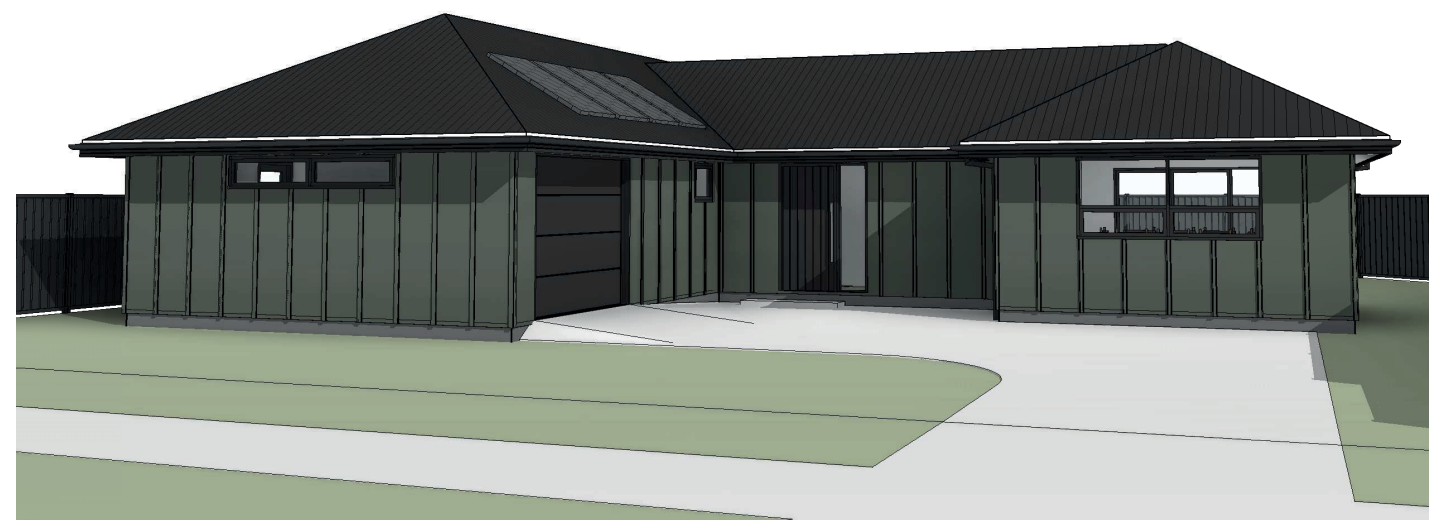


Garage 1

**FOR SALE**

**25 Kōrari Avenue**

**LOT  
67**



Section 500 m<sup>2</sup>



House 161 m<sup>2</sup>



Bedroom 4



Bathroom 2



Garage 1

## STRAIGHT UP STUNNER

This exquisite four-bedroom family home skilfully utilises space and light to produce a warm yet functional family home on a 500m<sup>2</sup> section, ready for you to add your own stylish touches.

The front entrance opens up into the bright and lively living and dining room, literally at the heart of the whare. The exquisite kitchen has ample storage and excellent preparation and cooking facilities with an extra-long breakfast bar. Slider doors leading to the perfect space for lapping up the afternoon sun.

This family home is set with generous bedrooms, a family sized bathroom equipped with a standalone bath, shower with a separate toilet. The master bedroom is accompanied by a striking ensuite and spacious walk-in wardrobe.

Harnessing the sun's energy, this home is designed to be solar powered. This includes an external heat pump, hot cylinder, solar roof panels, inverter, and smart meter. Whilst the system is set up for batteries, they are not included.



VISIT OUR WEBSITE & TAKE A VIRTUAL TOUR

**Kōrero mai**  
Contact us

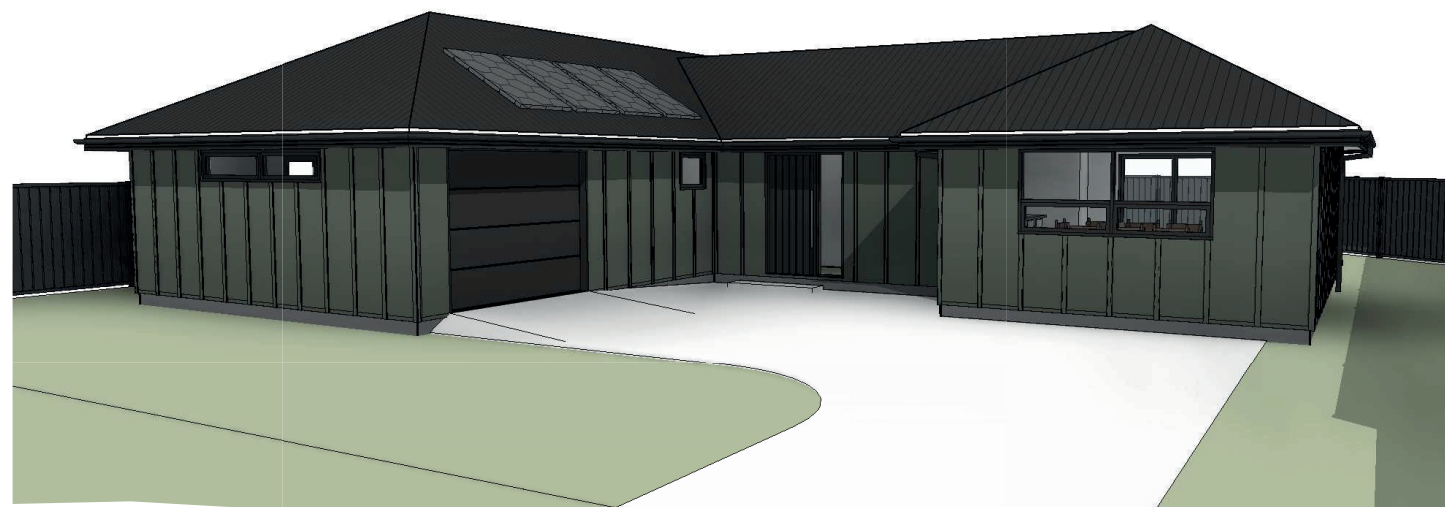
06 871 5350  
info@waingakau.co.nz  
www.waingakau.co.nz



**Waingākau**

# Artistic images

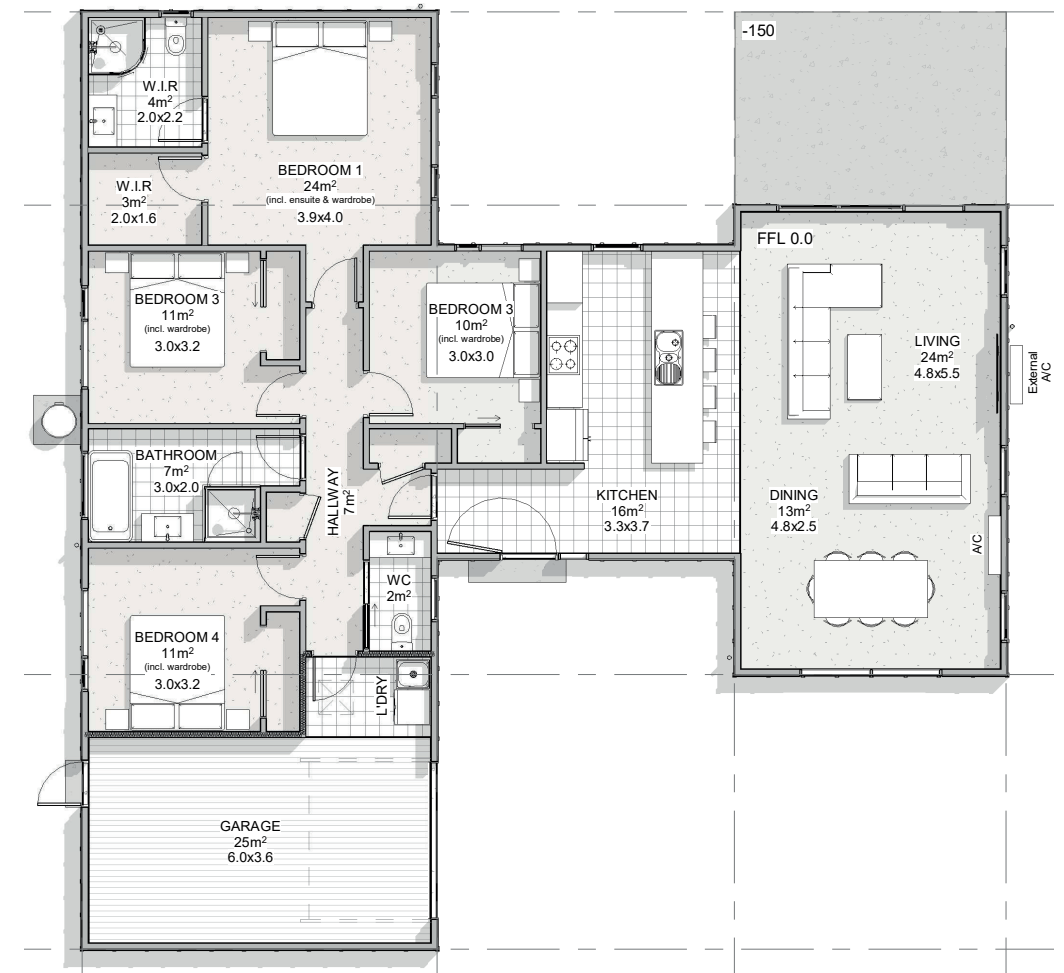
25 Kōrari Avenue



Tangata ako ana i te kāinga, te tūranga ki te marae, tau ana

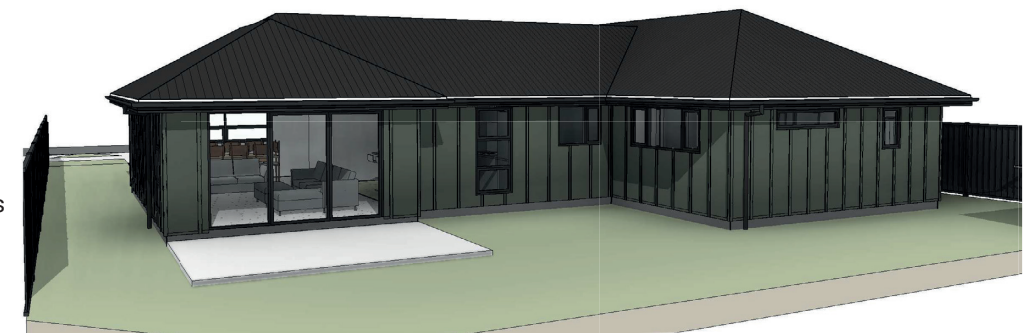
# Architectural floorplan

LOT 67



Floor Plan

**Please note:**  
All features, dimensions, colours  
and stylisation are approximate  
& subject to minor changes  
during construction.



A person nurtured in the community contributes strongly to society